

High Performance Power Line Filter for Medical Applications

HZ Series



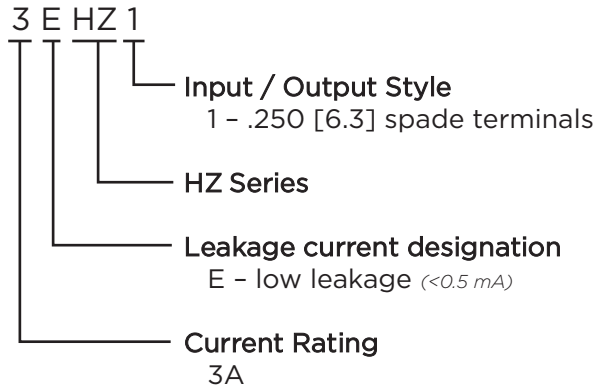
UL Recognized
CSA Certified
VDE Approved



HZ Series

- Designed to provide good attenuation to RFI noise in the frequency range from 10KHz to 30MHz
- Size and cost effective
- Low leakage current

Ordering Information



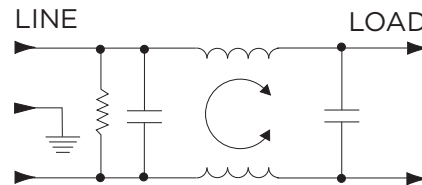
Available Part Number

3EHZ1	
-------	--

Specifications

Maximum leakage current each line to ground:	
@ 120 VAC 60 Hz:	2 µA
@250 VAC 50 Hz:	5 µA
Hipot rating (one minute):	
line to ground:	2250 VDC
line to line:	1450 VDC
Rated Voltage (max):	250 VAC
Operating Frequency:	50/60 Hz
Rated Current:	3A
Operating Ambient Temperature Range	
(at rated current I_r):	-10°C to +40°C
In an ambient temperature (T _a) higher than +40°C the maximum operating current (I _O) is calculated as follows: I _O = I _r √(85-T _a)/45	

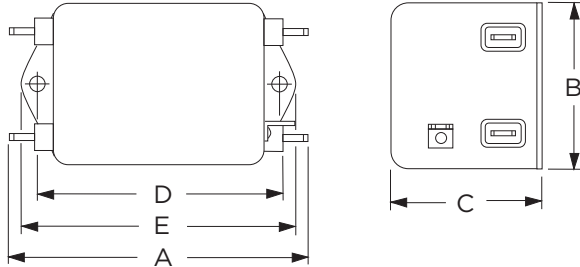
Electrical Schematic



High Performance Power Line Filter for Medical Applications *(continued)*

HZ Series

Case Styles



Case Dimensions

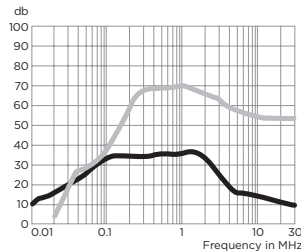
Part. No.	A (max)	B (max)	C (max)	D $\pm .015$ $\pm .38$	E (max)
3EHZ1	3.54 89.9	2.08 52.8	1.31 33.3	2.938 74.63	3.35 85.1

Performance Data

Typical Insertion Loss

Measured in closed 50 ohm system

3EHZ1



— Common Mode / Asymmetrical (L-G)
— Differential Mode / Symmetrical (L-L)

Minimum Insertion Loss

Common Mode / Asymmetrical (Line to Ground)

Part Number	Frequency – MHz							
	.01	.05	.15	.5	1	5	10	30
3EHZ1	10	24	34	34	35	15	10	5

Differential Mode / Symmetrical (Line to Line)

Part Number	Frequency – MHz							
	.01	.05	.15	.5	1	5	10	30
3EHZ1	10	25	54	70	70	65	55	55